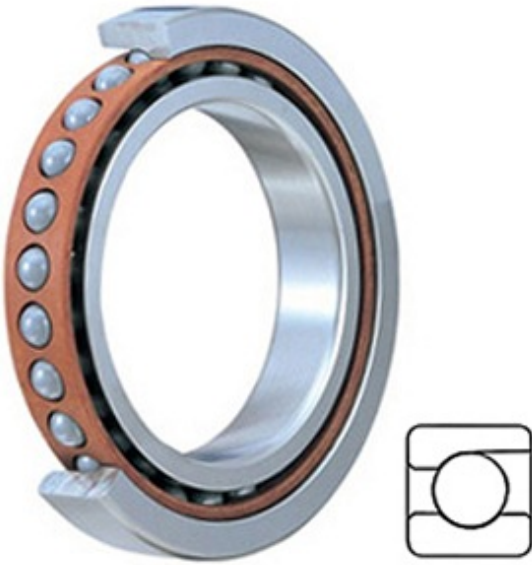




Jinan QiMing Bearing Co., Ltd.



2MM9309WI SUL Bearing 2D drawings and 3D CAD models

1.772 Inch | 45 Millimeter x 2.677 Inch | 68 Millimeter x 0.472 Inch | 12 Millimeter TIMKEN 2MM9309WI SUL Precision Ball Bearings

Bearing No. 2MM9309WI SUL

Category	Precision Ball Bearings
Inventory	0.0
Manufacturer Name	TIMKEN
Minimum Buy Quantity	N/A
Weight	0.132
EAN	0087796326057
Product Group	B04270
Enclosure	Open
Precision Class	ABEC 7 ISO P4
Material - Ball	Steel
Number of Bearings	1 (Single)
Contact Angle	15 Degree
Preload	Light
Raceway Style	1 Rib Outer Ring
Cage Material	Phenolic
Rolling Element	Ball Bearing
Mounting Arrangement	Universal
Flush Ground	Yes
Inch - Metric	Metric
Other Features	Single Row Angular Contact Super High Precision
Long Description	45MM Bore; 68MM Outside Diameter; 12MM Width; Open Enclosure; ABEC 7 ISO P4 Precision;



Jinan QiMing Bearing Co., Ltd.

	Steel Ball Material; 1 (Single) Bearings; 15 Degree Contact Angle; Phenolic Cage Material; 1 Rib Outer Ring Rac
Category	Precision Ball Bearings
UNSPSC	31171531
Harmonized Tariff Code	8482.10.50.28
Noun	Bearing
Keyword String	Angular Contact Ball
Manufacturer URL	http://www.timken.com
Manufacturer Item Number	2MM9309WI SUL
Weight / LBS	0.29
d	1.772 Inch 45 Millimeter
D	2.677 Inch 68 Millimeter
B	0.472 Inch 12 Millimeter